



HANDPIECE

Dental Diode Laser



Only one and first AFL® (Adjustable Fiber Length)
system in the World.

K2mobile
2020NE(New Edition)

Greetings and **P**hilosophy

Dental laser specialty Since 2002

Hulaser has an ambition to become a company that has pride and puts the best effort as a group of specialists who are progressive, positively challenge, and make impossible possible under the company motto of Progress, Positive, Possible, Pride and Professional.

To be a company that endeavors for the best products and is young and sincere, every worker of Hulaser gives a promise of following the business ethics with right company value, establishing a foothold to the world and being a global medical company.

Workers in Hulaser handle every matter based on principles, moderation and general sense. Every staff and worker of Hulaser works on the basis of such philosophy without any exception.

We look forward lots of support from the customers to be the best company, and promise that we will return the profits to the customers. We hope your healthiness and successful achievement sincerely.

All employees of Hulaser

01 Progress

Value that can adapt oneself to changing situations with the idea that today's dream can be reality tomorrow thanks to the fast development of modern technology.

02 Positive

Like a wise man said, "think positive and run your effort, then everything is possible", nothing is impossible if we think It's possible.

05 Possible

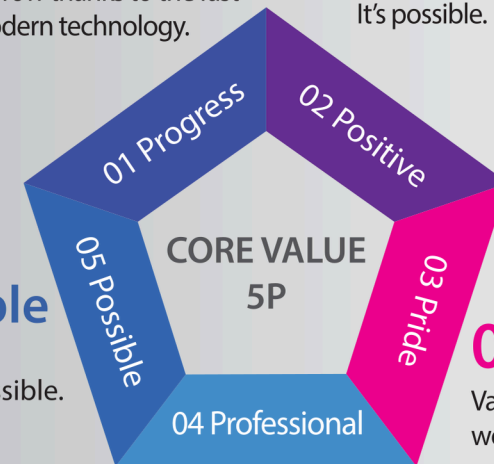
Value that turns impossible into possible.

03 Pride

Value that loves his/her work, feels self-confident, and bears hardships.

04 Professional

Value that are actual and basic, and make wishes possible.



History

2019

Global business center established
Participated in 2019 global dental exhibitions
IDS, AEEDC, DSC, SINODENTAL, SIDEX, DENTECH, GNYDM
Exporting to over 50 countries
K2 mobile 2019 New Edition launched

2018

Participated in
Dubai, Singapore, philippines, Japan, Russia, China, USA
International dental exhibitions
Exporting to over 40 countries
USA branch office set up

2017

Launching K2 mobile in IDS in Cologne
Participating 7 international dental exhibitions
1 million dollars government fund received for research and development of dental diode laser
New products project launched

2016

Relocated the company building to Gasan Digital Valley (present)
Obtained Governmental Task for Product Fair Improvement
Achieved and finished the Enhancing Capabilities for Export Business project
Joined overseas exposition in the Middle East, US and Eastern Europe
Achieved overseas certificates of CE and FDA
Selected as 2016 Good Design
Obtained overseas patents from the US and China and patent pending for new overseas patents
Began export to the Middle East, Europe, Asia, etc.
Began a new product development project

2015

Obtained patents in the US, China and Europe
Registered design patent / Obtained and registered multiple technological patents
Applied and obtained overseas certificate
Concluded a contract for the overseas sales office of Knowledgee Industry Center in Munjeong
Expanded the clean room of laboratory

2014

Developed K2 mobile laser
Applied multiple patents
Changed the company name to HULASER Inc.
Obtained the governmental task worth 1.6 billion

2013

Launched K lasers in IDS in Germany
Launched K lasers in Korean market
Launched K4 MPX
Developed K2 laser
Developed K1 laser

2011

Completed the development of Zenus
Relocated the main laboratory for dental laser

2009

Dental Laser Research and development (Diode, Er-YAG, CO2 laser)

2008

2002

PSMED Inc. Conversion to a corporation
Relocated in Seocho-gu, Seoul
Founded a company laser laboratory
PSMED Co., Ltd. established

Technical patents and awards (domestic and international)

Domestic patents



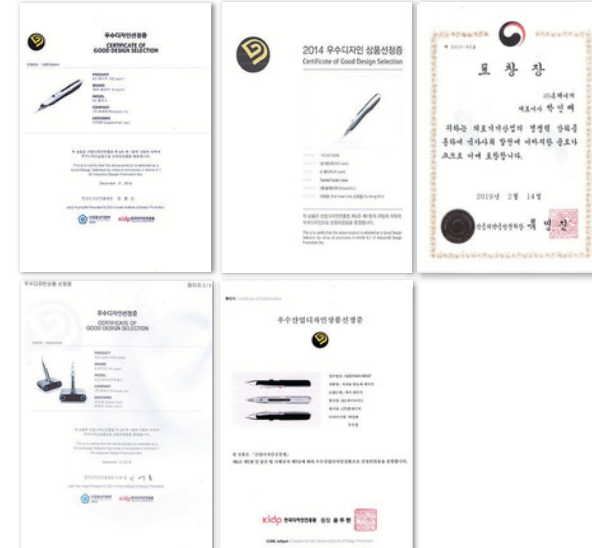
Registrations



International patents



Awards



Design patents

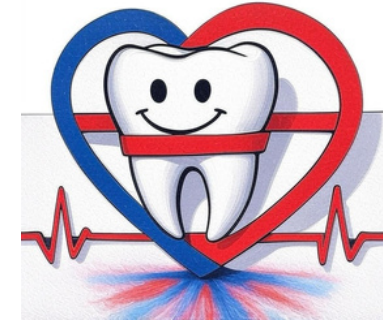


Contact us

Certificates



Available Now in UAE



VitalPath Medical Equipment

Membership

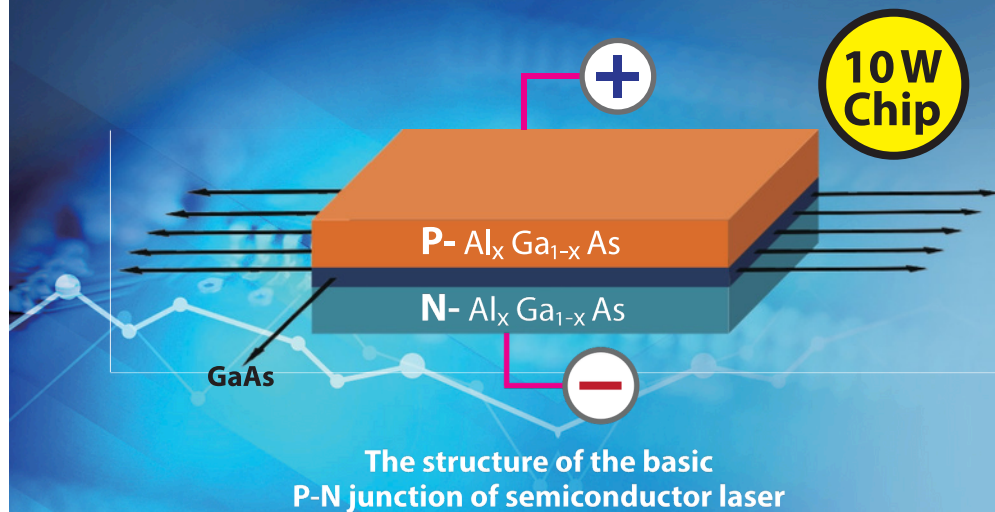
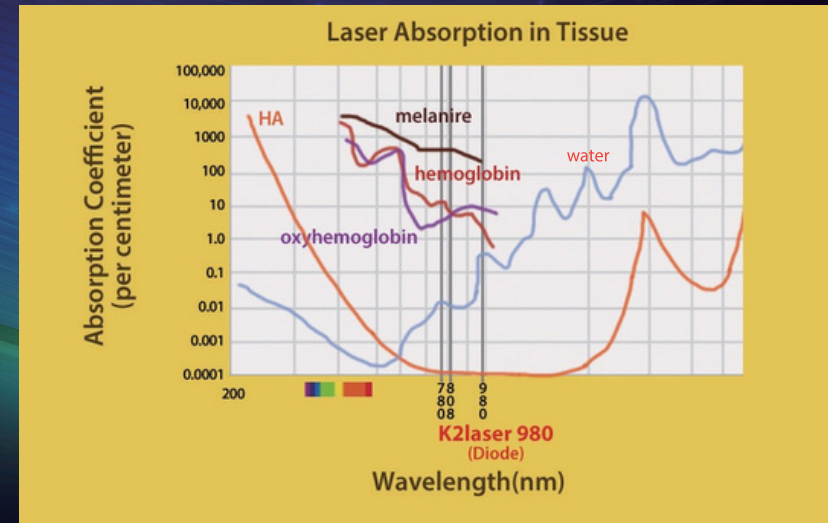


Service Tel.: +971502738230 , www.dentalshop.ae ,
sales@dentalshop.ae

Features and Innovations of K2 mobile handpiece laser

Wavelength

The wavelength "980nm" is more absorbent to water in human tissue that leads to less thermal damage to the target tissue while in surgery.



Power Diode by **HECoSA™** Technology
(High efficient chip on submounting alignment)



CW
3.5

Pulse
6.0

More than enough power for every applications

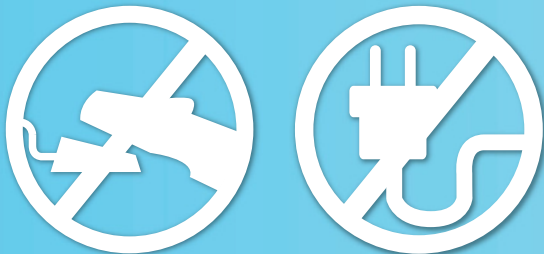
Power
3.5W Continuous wave emission

6.0W pulse emission — coolpulse 1=10Hz
coolpulse 2=100Hz

Stable and sufficient output through HeCoSa technology

Full Wireless

Without connecting to external power cord and bothering footpedal, you can enjoy laser practice with maximum mobility and portability



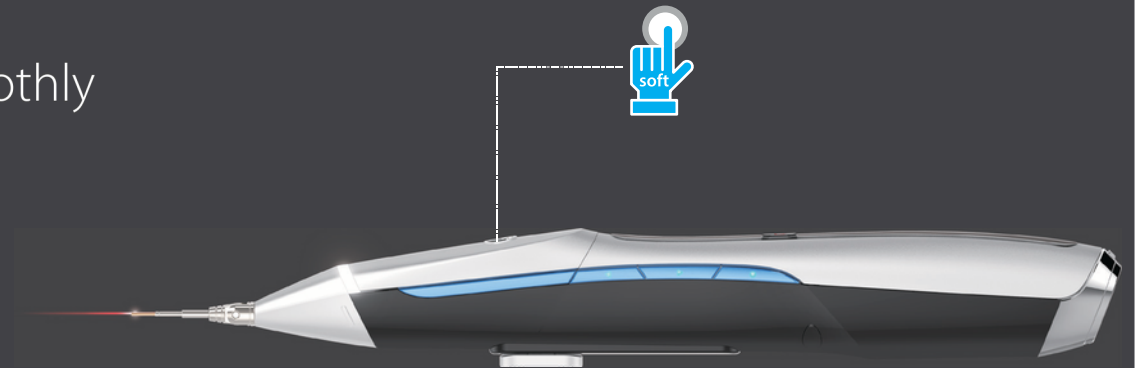
Soft button technology

Soft button technology that presses smoothly

as one of the most important functions of a hand-piece type laser

The soft button technology makes it easy to conduct
and pause laser irradiations

It is soft and minimizes finger pressure and finger fatigue
despite long periods of use



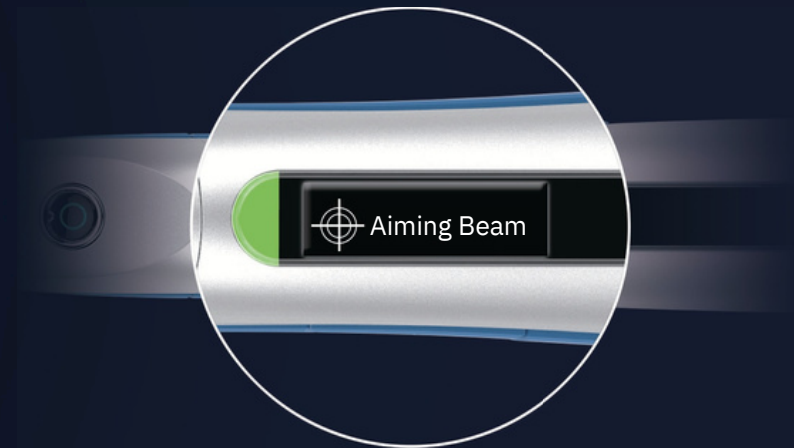
Auto/Manual emission

Automatic/Manual laser irradiation function

Auto emission function to reduce
finger fatigue during long irradiations

Bright and clean OLED display

Optimal OLED display to show small letters clearly



Gravity sensors for use of both hands

OLED reacts to use of right and left hands to provide optimal display of equipment's status



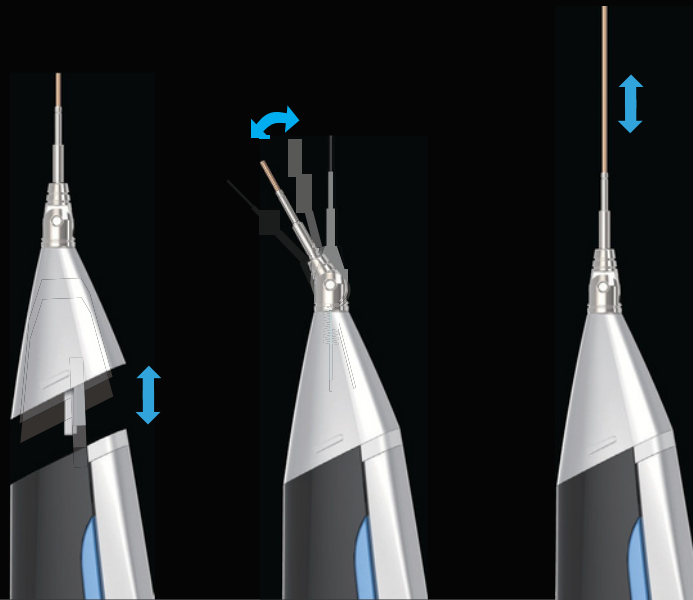
Ideal weight and size for handheld device

With battery, the weight is light at 135g and grip is ergonomic
Designed to reduce fatigue in the wrist or fingers even after long periods of use

Long lasting battery

Big capacity of 1700mAh battery will make daily practice free from bothering of change of battery.



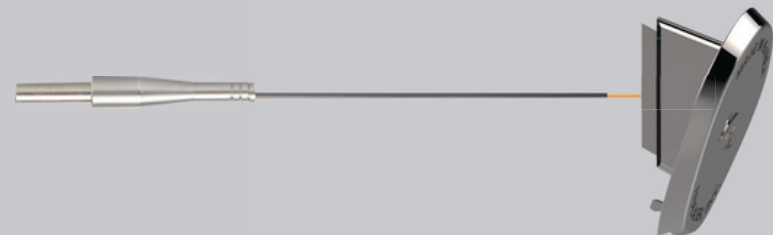


Autoclavable front aluminum cap for various optic fibers for every applications

Two kinds of tips enable various applications and minimize the inconvenience of tip changing. The front cap made of aluminum is applicable to all types of optic fiber and can easily be used in every application. It is removable for disinfection after use.

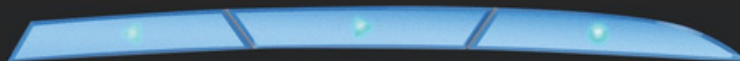
Least consumables

Costs of consumables that burden users have been minimized. The handy type solves concerns regarding consumables, and the patented sliding-type optic fiber length adjustment functionality allows adjustment of optic fiber length satisfying individual user's needs.



Easy menu navigation

Programmed to enable easy navigation between various functions



Left
Down
Home

Right
Up
Upstage

Enter
Stand by
Ready



Fiber cleaver inside

Fiber cleaver that can cut optic fiber to use tips as new is installed in addition to the versatile tips that can minimize cost of consumables

Voice guidance and confirmation

Prevention of malfunctioning and reconfirmation of instructions
to strengthen safety with voice confirmation



Battery saving

Sleeping mode and power off in 30minutes

When not in use for 10minutes or more, battery is saved by switching
to sleeping mode When not in use for 30 minutes or more accidentally,
power turns off automatically

30 presets for convenience

30 presets are saved

30 most frequently used presets are saved
to maximize user convenience

4 user's memory

4 user memories are added to remember

the presets that the user uses most frequently to
suit user characteristics

(select memory) 
M1 M2 M3 M4



Specification

Main body

Size (L x D x H) (without tip)	205mm x 25mm x 30mm
Weight	135g, with battery inside
Medium	GaAlAs
Wavelength	980nm±10nm
Max output power	3.5 W(CW)
Max peak power	6.0 W(Pulse)
Emission mode	CW/Pulse mode
Aiming Beam	635nm Laser diode, max 5 mW

Charging station

Dimensions	160 x 90 x 38mm(W x H x D)
Weight	150g
Voltage Input	100~240V, 47~63Hz
Battery	Lithium Ion 3.7v 1700mAh
Recharge time	3 hours
Port	4 battery charging port

Classifications

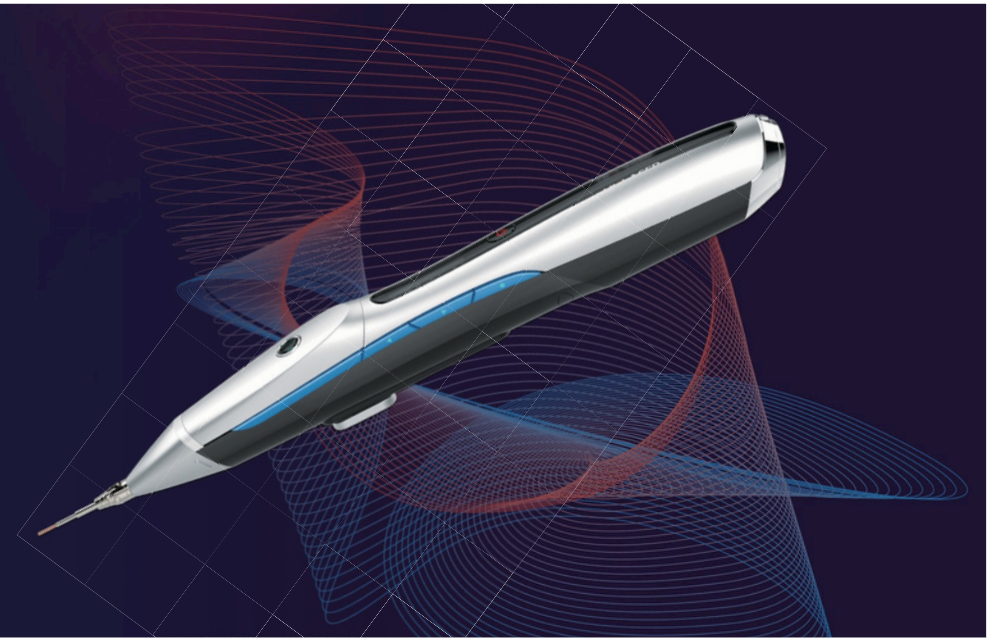
MFDS Device – Class III Laser Surgical Unit : Diode
 CE Device – Class IIb medical Device

FDA Device – 79 GEX Class II Medical Device
 CDHR Laser – Class IV (4) Laser

HIGHTECH IN THE BEAUTY

Design Meets High-Tech

The utmost high tech met the ultimate beauty.
We imbued soul to give life by pursuing perfection
that lacks or adds nothing.



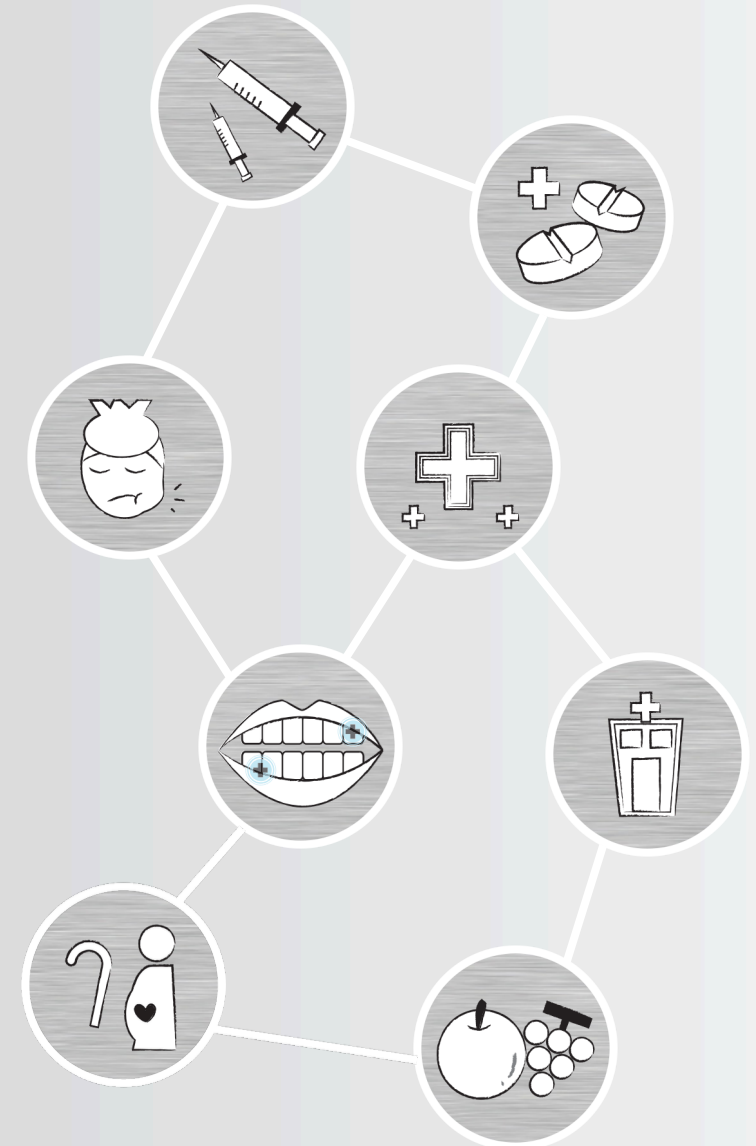
Packaging

Safe and sophisticated packaging protects the product,
ensures high reliability and offers basic information of product.

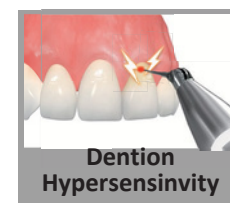
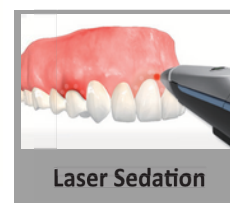
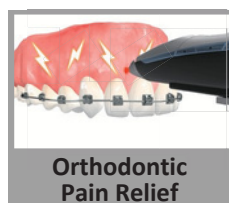
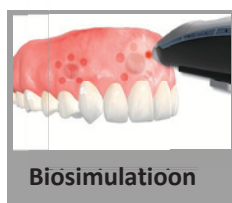
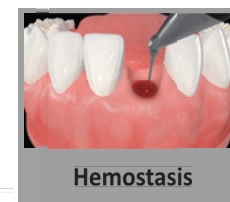
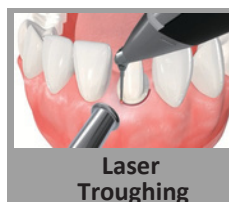
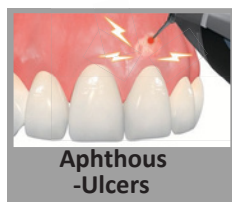
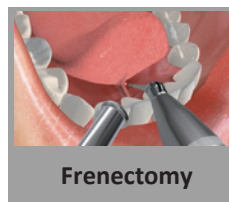
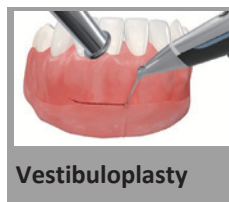
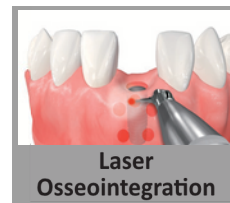
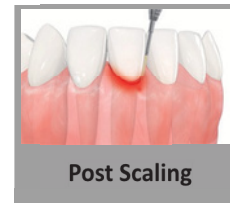
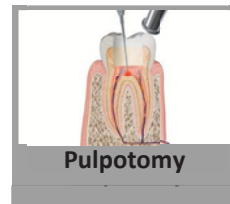
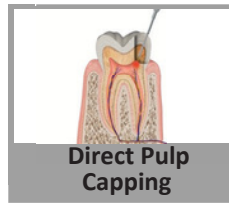
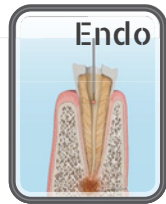
Patients are looking for Laser treatments

Becouse...

- Faster recovery : minimal to no bleeding, less swelling
- Food taking immediate after treatment
- Less need for pain relievers
- Less chance of infection and antibiotics
- Less fear, anxiety and stress : Good news for dental-phobic patients
- Return to work/daily activities quicker
- Fewer visits to dental clinics
- Reduced post operative infection(swelling)
- Safer treatment for chronic patients
- Tooth whitening : Single or twice visit procedure



Applications of K2 mobile (30 applications)



You can find clinical movies in
www.k2lasers.kr -> e-learning

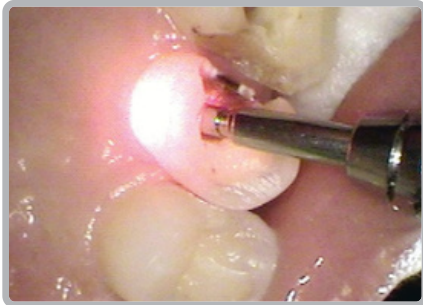
Root Canal Sterilization

- Application : Root canal sterilization of #15
- Patient : Age 47, Female with pain in #15 Apex
- Parameters : 0.3W pulse (gentle mode)

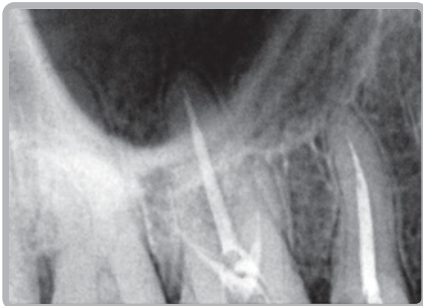
before
treatment



during
treatment



1 week
after Tx



Root Canal Sterilization

- Application : Root canal sterilization of #17
- Patient : 40's, Female with pain in #47
- Parameters : 0.3W cw (standard mode)

during
treatment



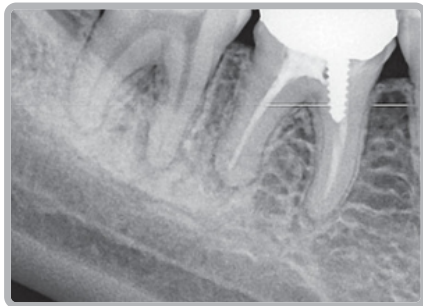
1 week
after Tx



Apical abscess Treatment

- Application : Apical abscess treatment of #47
- Patient : Age 33, Female with apical abscess
- Parameters : 0.3W cw (standard mode)

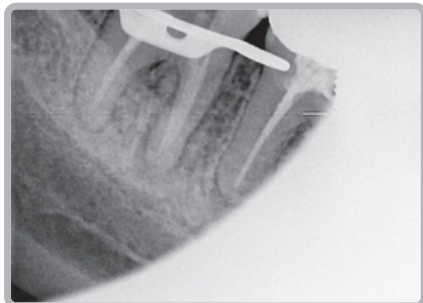
before
treatment



during
treatment



1 week
after Tx



Apical abscess Treatment

- Application : Apical abscess treatment of #21
- Patient : Age 44, Male with apical abscess
- Parameters : 0.3W pulse (gentle mode)

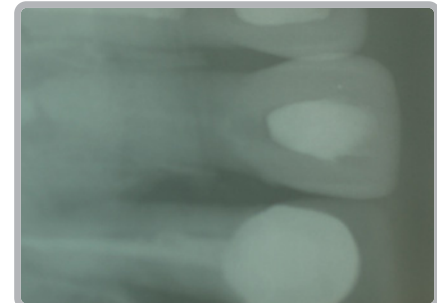
before
treatment



during
treatment



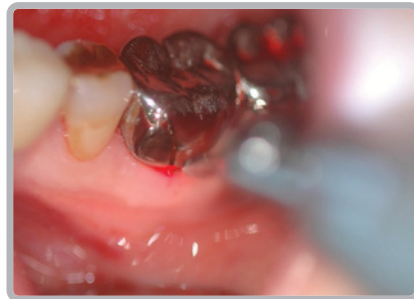
after
treatment



Laser Curettage Moderate

- Application : Laser curettage of #36
- Patient : Age 67, Female with periodontitis
- Parameters : 1.0W cw (standard mode)

before
treatment



after
treatment



1 week
after Tx



Laser Curettage Moderate

- Application : Laser curettage of upper jaw
- Patient : Age 42, Female with periodontitis and bleeding
- Parameters : 0.8W cw (standard mode)

before
treatment



3months
after 1st Tx



right after
2nd Tx



Laser Curettage Severe

- Application : Laser curettage of #16
- Patient : Age 55, Female with periodontitis
- Parameters : 1.4W cw (standard mode)

before
treatment



after
treatment



1 week
after Tx



Curettage Mild

- Application : Laser curettage of #13~23 and #33~44
- Patient : Age 20s, Male with gingivitis
- Parameters : 1.8W pulse (gentle mode)

before
treatment



1 week
after Tx



2 week
after Tx



Gingivectomy

- Application : Gingivectomy of #12
- Patient : Age 9, Female with hyperplasia
- Parameters : 1.4W cw (standard mode)

pre operation



post operation



Gingivectomy

- Application : Gingivectomy of #11
- Patient : Age 22, Female ((for esthetic purpose)
- Parameters : 3.0W cw (standard mode)

pre operation



post operation



2 week post op



Gingivectomy

- Application : Gingivectomy of #13~23
- Patient : Age 26, Female (for esthetic purpose)
- Parameters : 2.6W pulse (gentle mode)

pre operation



post operation

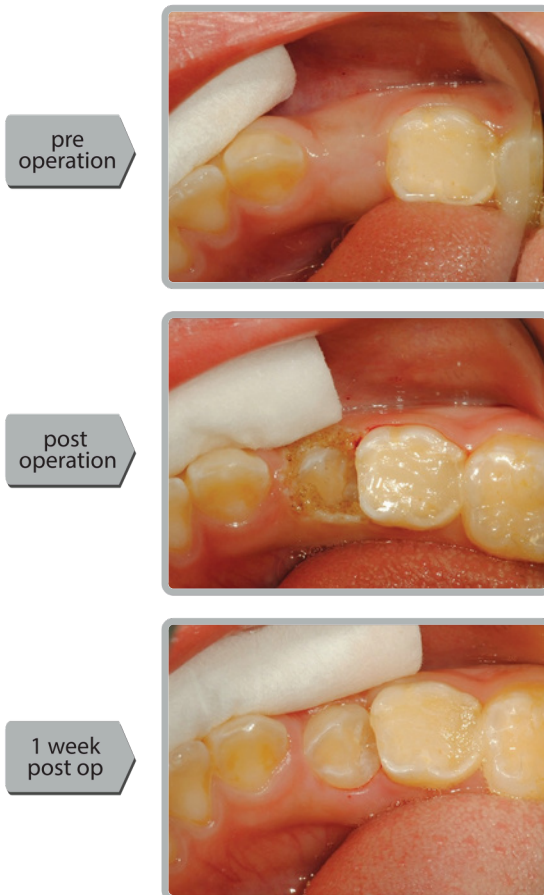


2 week post op



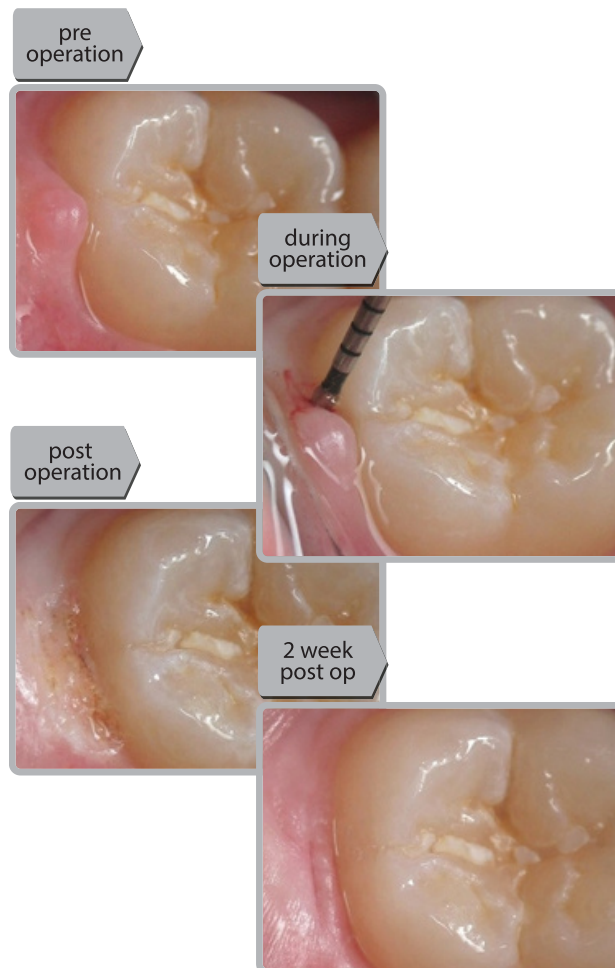
Crown Exposure

- Application : Operculectomy of #34
- Patient : Age 8, Female
- Parameters : 1.4W cw (standard mode)



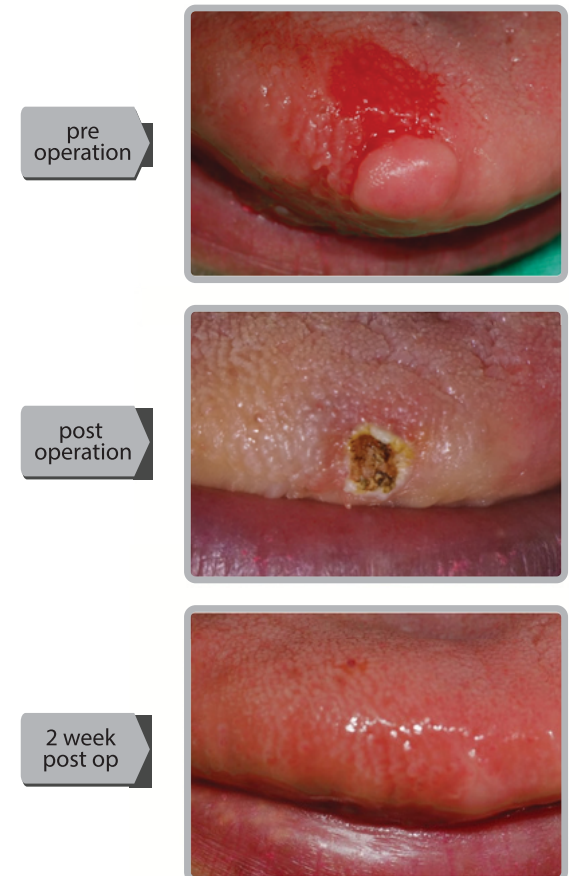
Operculectomy

- Application : Distal operculectomy of #38
- Patient : Age 10, Male
- Parameters : 2.8W pulse (gentle mode)



Fibroma Removal

- Application : Fibroma removal of the tongue
- Patient : Age 50s, Female
- Parameters : 1.4W cw (standard mode)



Implant Recovery

- Application : Gingivectomy around implant of #36
- Patient : Age 32, Female
- Parameters : 2.0W cw (standard mode)

pre operation



post operation



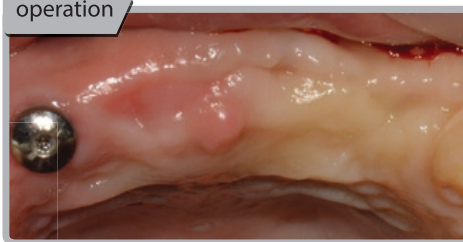
1 week post op



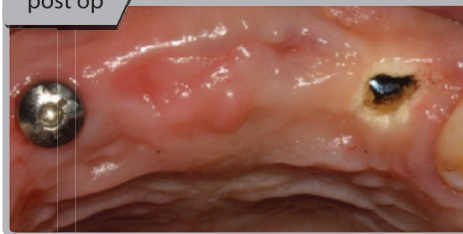
Implant Recovery

- Application : Implant opening
- Patient : Age 33, Male
- Parameters : 1.5W pulse (gentle mode)

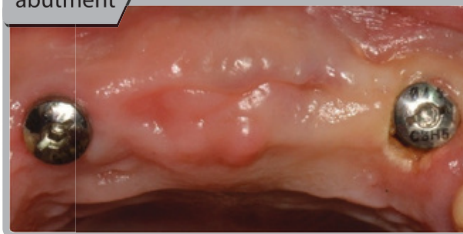
pre operation



Right after post op



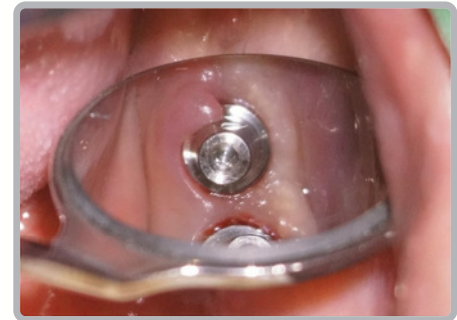
healing abutment



Gingival Trimming Around Abutment

- Application : Gingival trimming around implant of #47
- Patient : Age 39, Male
- Parameters : 2.8W pulse (gentle mode)

pre operation



post operation



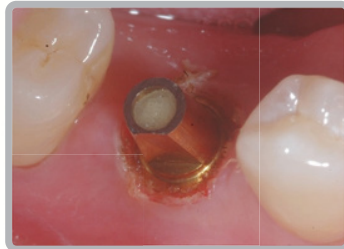
Gingival Trimming Around Abutment

- Application : Gingivectomy around implant of #45
- Patient : Age 37, Female
- Parameters : 1.8W pulse (gentle mode)

pre
operation



post
operation



post
operation



4 days
post op



Implant Recovery

- Application : Implant opening of #37
- Patient : Age 23, Male
- Parameters : 2.0W cw (standard mode)

pre
operation



post
operation



1 week
post op



Aphthous Ulcers

- Application : Ulcer treatment
- Patient : Age 10, Female
- Parameters : contact → 0.3W pulse(1min)
non-contact → 2.0W cw(2min) +oral ointment

before
treatment



after
treatment



1 week
after Tx



Laser Troughing

- Application : gingivectomy for impression taking
- Patient : Age 30, Female
- Parameters : 2.0W cw (standard mode)

before
treatment



after
treatment



1 week
after Tx



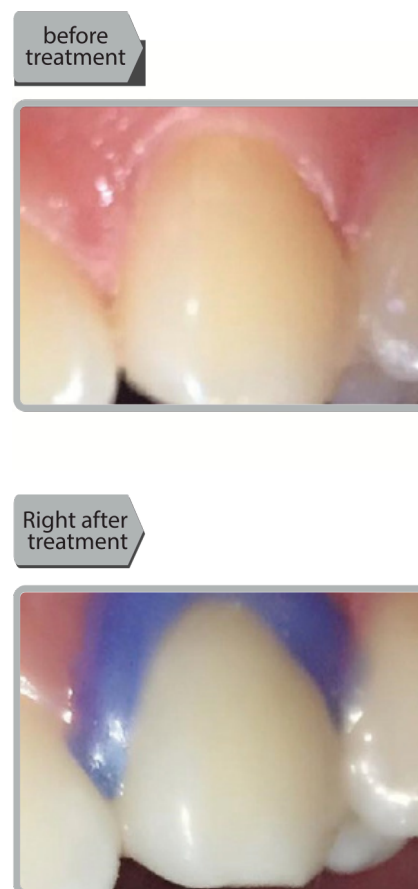
Melanine Depigmentation

- Application : Melanine depigmentation
- Patient : Age 55, Male
- Parameters : 1.5W pulse (gentle mode)



Laser Tooth Whitening

- Application : Laser tooth whitening at #23
- Patient : Age 24, Female
- Parameters : 2.4W pulse (gentle mode)



Hemostasis

- Application : Hemostasis after tooth extraction
- Patient : Age 50, Male
- Parameters : 3.0W pulse (gentle mode)

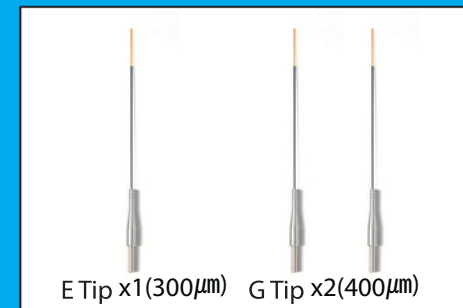




K2 Mobile Main body x1



Battery charger x1



Optic ber tip x3
 (Endo x1/General x2)



Lithium-ion battery x2



Laser protection goggle x2



Power supply for the charger x1



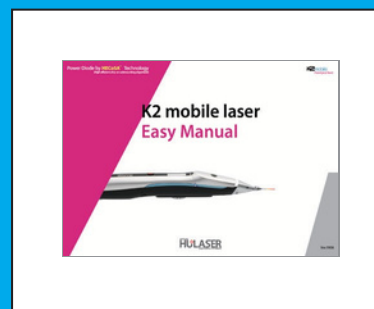
Fiber jacket stripper x1



User manual



Operation manual



Easy manual



Laser operating sign



Package