

COMFORT+

The First Move into Digital Dentistry

Lightning **Fast** / Effortlessly **Easy** / Burden **Free**



NEXO^D

Key Components

Remote control

Control scanning with a simple tap.
Navigate through scan stages
effortlessly. Experience a hands-free
process during the entire scan.



Scan
Start/Stop/Steps

Scanner Status light

- Ready
- Scanning
- Off



Anti-fog



Power Button

Extensive Connectivity High Compatibility

.STL .PLY .OBJ

It supports an open file format compatible with any device, facilitating collaboration with dental labs and other partners.

Accurate Scanning

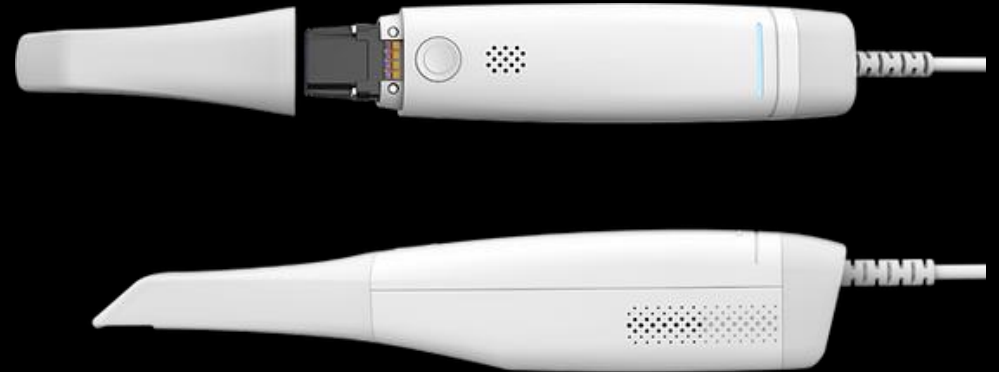
The advanced technology enables precise scanning. For best result, precision is a top priority from scanning to design and milling.

Quick and Comfortable

Experience comfort plus digital Impressions.

Ergonomic Design

Designed considering center of gravity and comfortable grips.



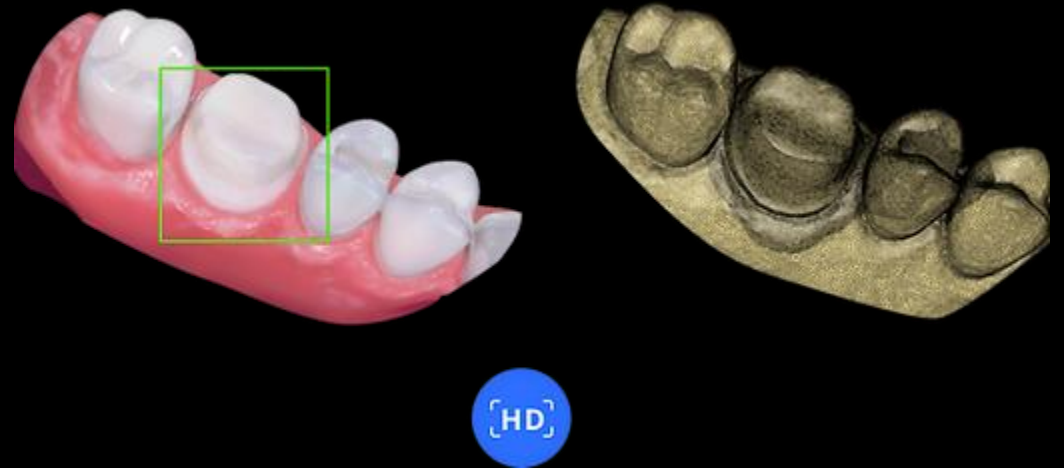


Small tip

Small tips for hard-to-scan areas and patients who have limited mouth opening.

HD Scanning

Use high-definition 3D scanning function for enhancing the details of margins lines.



Add comfort with COMFORT PLUS

No need to master or overthink.
Navigate with finesse through an intuitive interface.
Experience comfort like never before.



Smart filter

Automatically exclude and scan soft tissue.



Smart filter On



Smart filter Off

Color mode

Choose from various color modes (Photo, Graphic, Mono) to view scanned data with enhanced clarity and precision.



Photo



Graphic



Mono

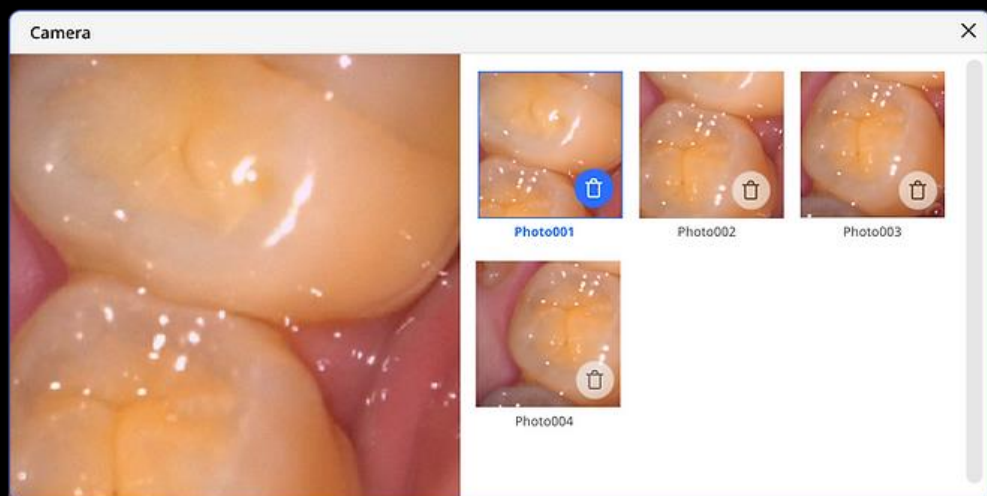
Trim

Effortlessly refine scan data.



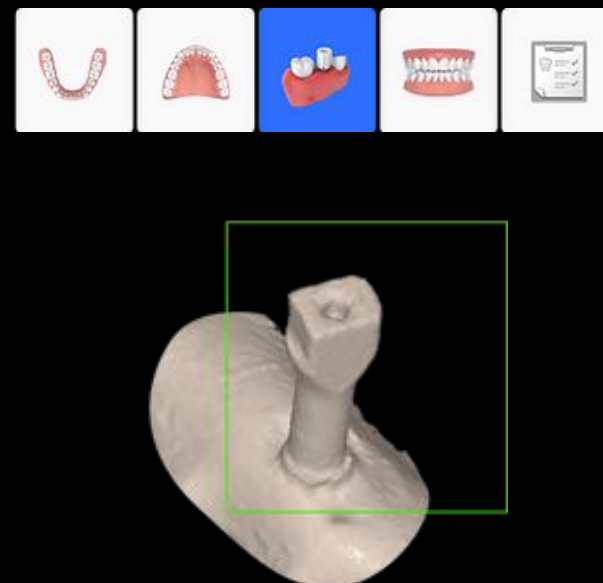
Snapshot & Camera

Snapshot and photo functions to capture and transmit data.



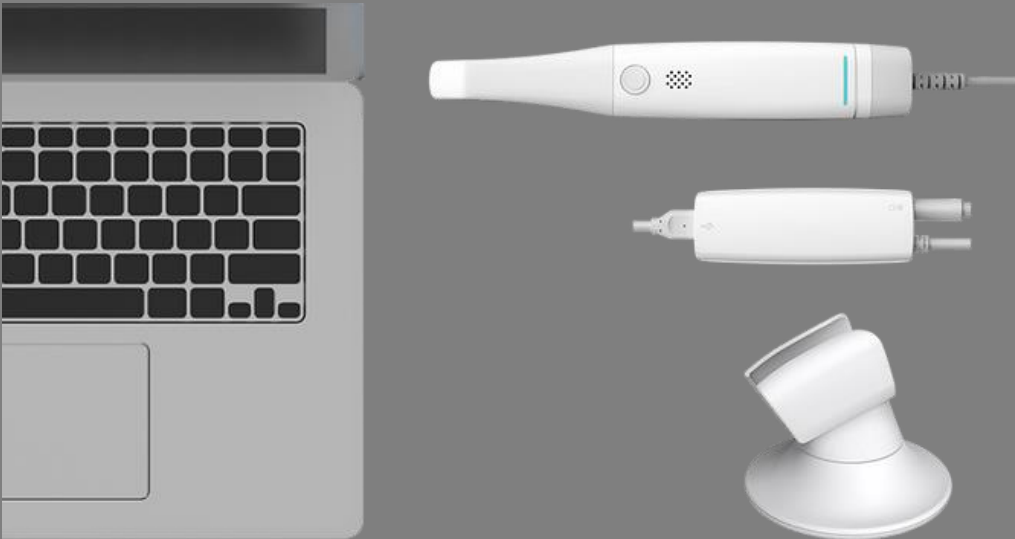
Implant

Scan body and scan post for implant treatment can be scanned.



PC Requirements

Intel Core i7-11900H
RAM 32 GB
NVIDIA GeForce RTX 3060 8 GB
Windows 10 Pro 64 bit



COMFORT+ Specification

| | |
|----------------------|-------------------------------------|
| Field of View | 14 x 14 mm |
| Depth of Field | 20mm |
| Accuracy | 10 μ m (Single Crown) |
| Scanning Method | Digital structured light projection |
| Acquisition | Realtime video process scanning |
| Weight | 280g (Only handpiece weight) |
| Dimensions | 263.5 x 43 x 49.4 mm |
| Tip (Autoclavable) | Autoclave 100 times |

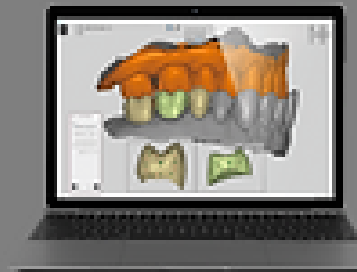
Experience our fully digital integrated

NEXOD Prosthetic treatment system



COMFORT+

Digital impression by
intraoral scanner



RAYDENT Designer

Design through
CAD SW



NEXOD M1

Fabrication of
the prosthetic

NEXOD Digital Workflow

NEXOD